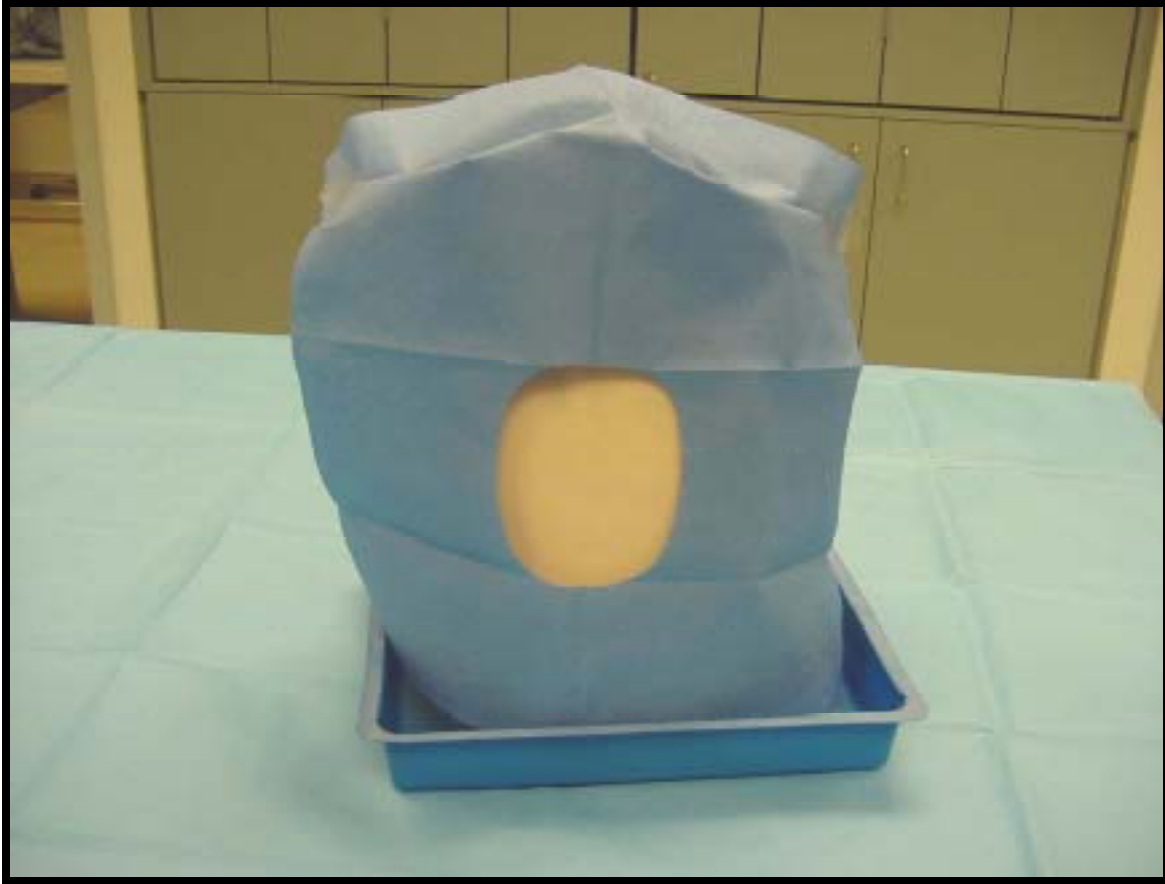


THORACENTESIS



Ingredients

- Medisim thoracentesis chest model
- Jackson's prep bulb filled with yellowish fluid
 - Scotch tape
 - Towels
- Shallow Basin
- Styrofoam blocks, approximately 8x25x40 cm
 - Foam blocks/strips approximately 4x6x25 cm

Steps



1. Position Jackson's prep bulb filled with yellow fluid behind the ribs from inside of the model which represents a portion of the chest wall



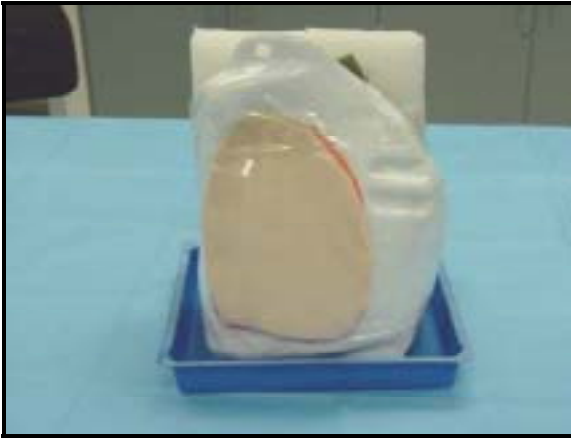
2. Support the container with a towel and foam blocks/strips



3. Secure with scotch tape



4. Add styrofoam blocks to stabilize the structure and keep it upright
-Secure with scotch tape



5. Put in a shallow container to collect all leakage



6. Cover with blue paper towel