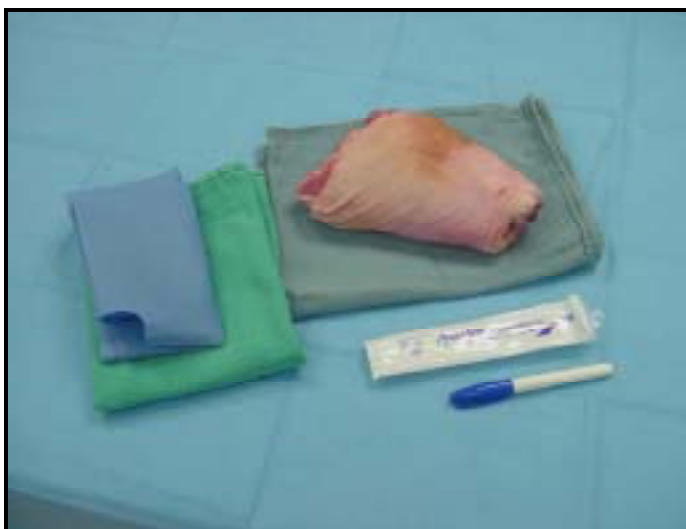
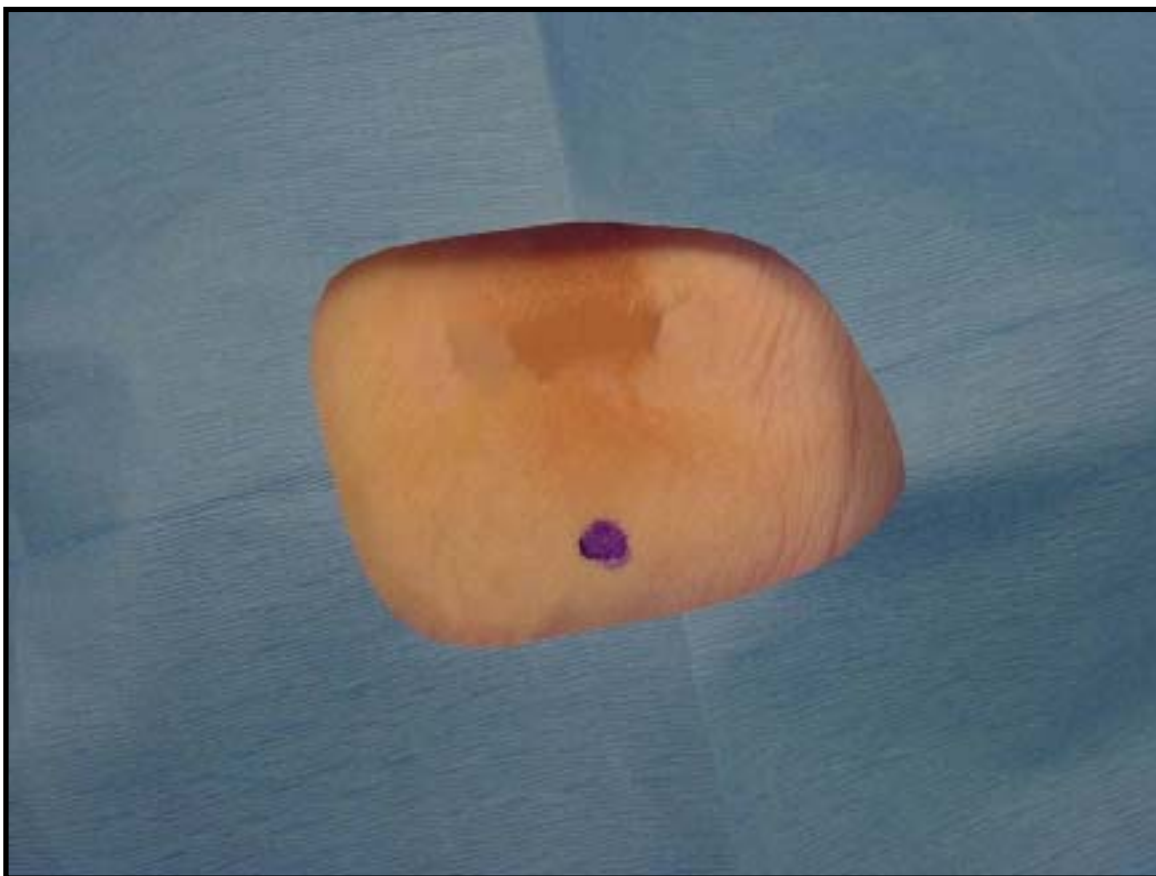


Skin/Tissue Biopsy



Ingredients

- Towels
- Pork hock
- Marking pen
- Blue towel with window

Steps



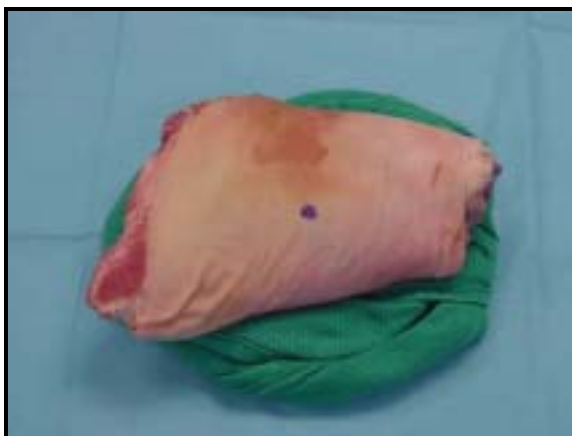
1. Defrost the pork hock at least 2 hours prior to the procedure



2. Using a marking pen, draw a dot 5 mm in diameter for the biopsy

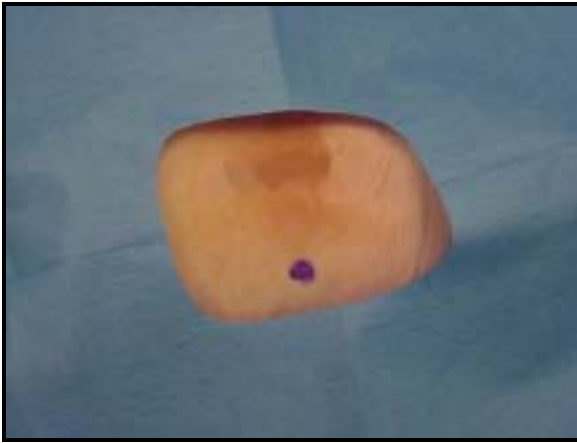


3. Roll up a wet towel as a donut ring to balance pork hock



4. A non-slide pad can be put underneath the model and towel "donut ring" for better stabilization.

5. Drape with a blue covering



****Both sides of the pork hock can and should be used***

NOTE: To practice Tissue Biopsy, pig liver can be used