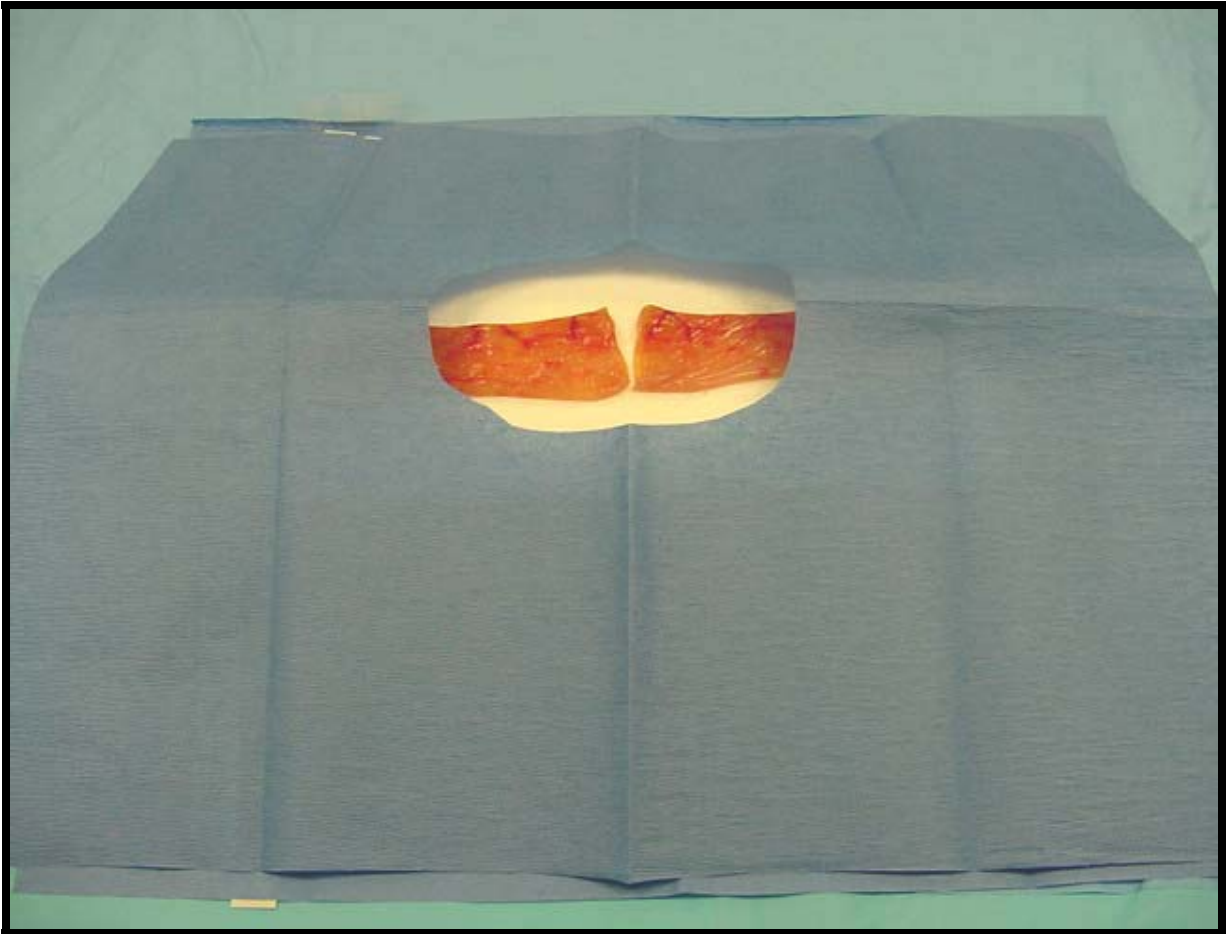


BOWEL ANASTOMOSIS

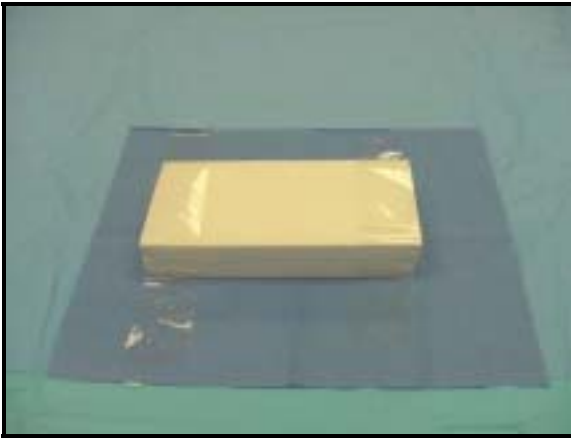


Ingredients

- Pig bowel segments, approximately 25 cm
- Styrofoam pads, approximately 15x30 cm
- T-pins
- Blue paper towel with window
- Scotch tape

Steps

1. Secure the Styrofoam pad to the table using scotch tape

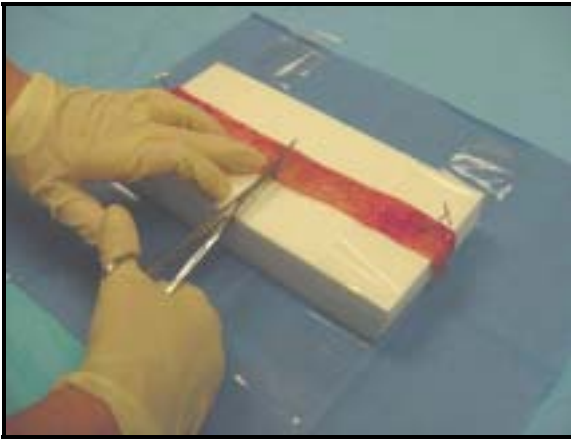


2. Position the pig bowel segment on the Styrofoam pad

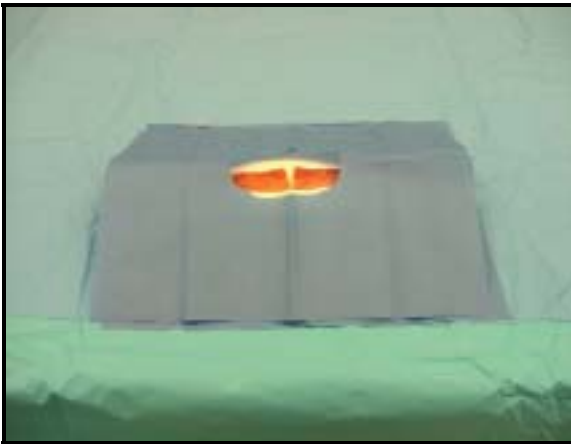


3. Secure it with T-pins on both sides





4. Cut the bowel segment in the middle



5. Position the blue paper towel on top of the model to indicate the working area