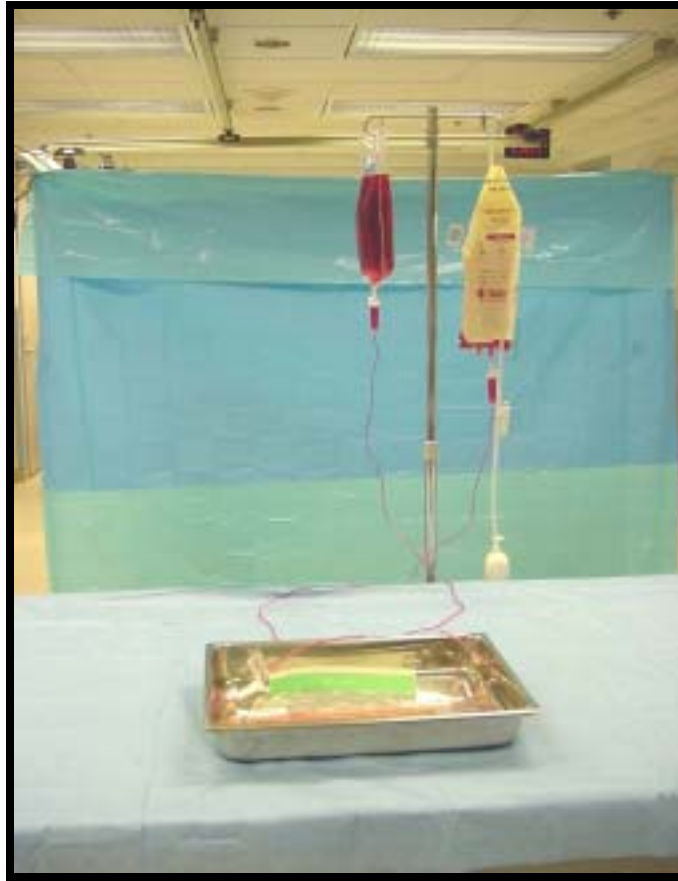
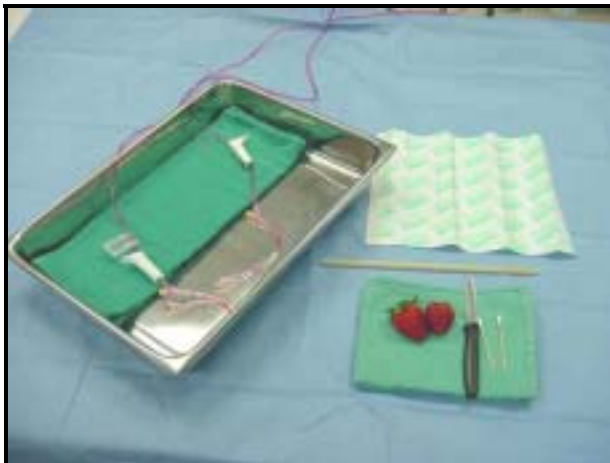


ARTERIAL EMBOLECTOMY

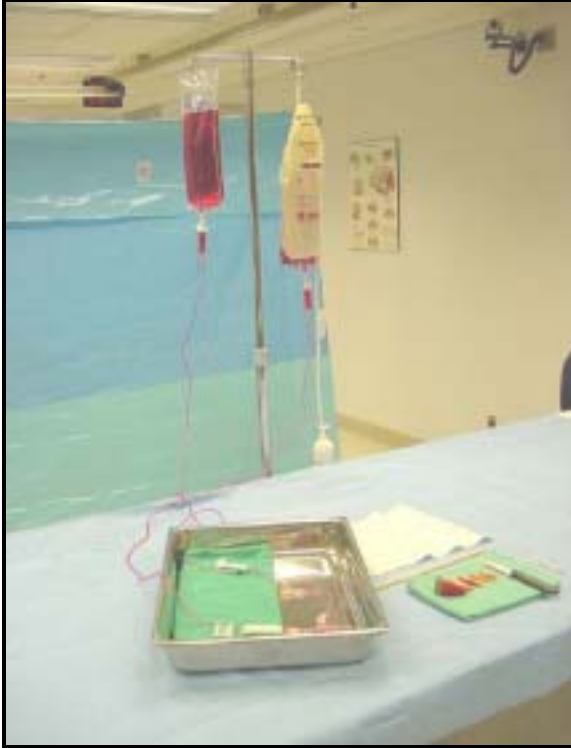


Ingredients

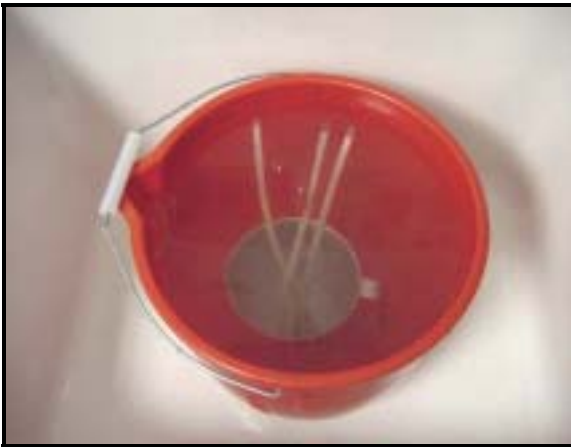
- MediSim arteriole model
 - Shallow tray
 - Opsite
- Two 1000 mL IV bags
 - Two IV lines
- Pressure bag
- One IV pole
- Red food dye
- 10cc syringe
- Bucket of water
- Strawberries
 - Knife
 - Swab



Steps



1. Using a syringe, inject red dye into the IV bags
 - Put a pressure bag on one of the IV bags, mark its IV line as the one feeding the distal end of the artery
 - Connect and flush IV lines
 - Hang the IV bags on the IV pole



2. Presoak the MediSim vessel models for 20-30 minutes in a bucket of water, positioning them upright to release air from inside



3. Cut the strawberries to obtain narrow strips of flesh approximately 2 cm long



4. Carefully put a strip of strawberry in the arteriole model



5. Push it further down using the swab to position it at about 7 cm from the end of arteriole



6. -Label the portion of the artery which has the strawberry flesh in it as "distal". Label opposite end as "proximal"

-Connect "distal" end of the artery to the IV bag with the pressure bag.

-Flush the artery; be careful not to dislodge the strawberry

-Connect the other side to the IV line